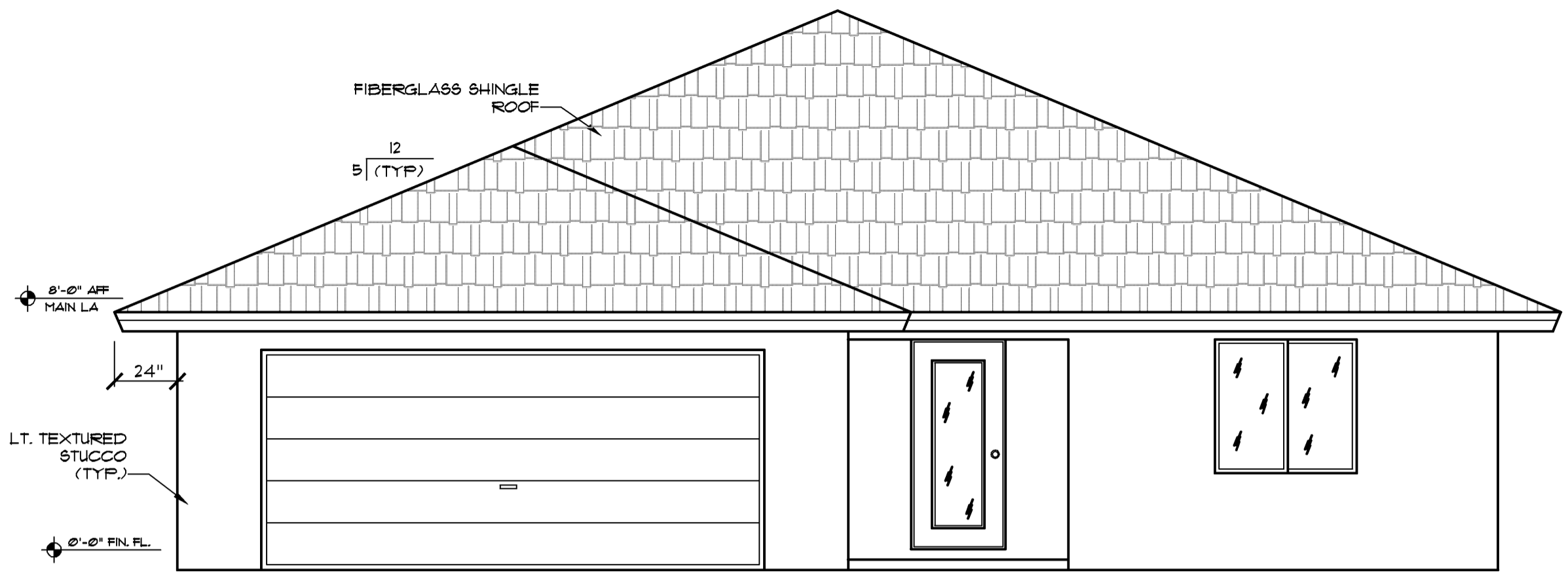


DESIGN PARAMETERS:

- APPLICABLE CODES:**
- FLORIDA BUILDING CODE, 6TH EDITION (2017) RESIDENTIAL
 - FLORIDA BUILDING CODE, 6TH EDITION (2017) MECHANICAL
 - FLORIDA BUILDING CODE, 6TH EDITION (2017) PLUMBING
 - FLORIDA BUILDING CODE, 6TH EDITION (2017) ENERGY CONSERVATION
 - FLORIDA BUILDING CODE, 6TH EDITION (2017) ACCESSIBILITY
 - 2017 FLORIDA FIRE PREVENTION CODE, 6TH EDITION
 - 2014 NATIONAL ELECTRICAL CODE
 - NATIONAL FIRE PROTECTION CODE, NFPA 101 (LIFE SAFETY)
 - NATIONAL FIRE PROTECTION CODE, NFPA 13 (FIRE SPRINKLERS)
 - NATIONAL FIRE PROTECTION CODE, NFPA 72
- BUILDING OCCUPANCY CLASSIFICATION:**
- GROUP A - ASSEMBLY
 - GROUP B - BUSINESS
 - GROUP D - DAY CARE CENTER
 - GROUP E - EDUCATIONAL
 - GROUP F - FACTORY INDUSTRIAL
 - GROUP H - HAZARDOUS
 - GROUP I - INSTITUTIONAL
 - GROUP M - MERCANTILE
 - GROUP R - RESIDENTIAL
 - GROUP S - STORAGE
- BUILDING CONSTRUCTION TYPE:**
- TYPE I-A
 - TYPE I-B
 - TYPE II-A
 - TYPE II-B
 - TYPE III-A
 - TYPE III-B
 - TYPE IV
 - TYPE V-A
 - TYPE V-B
- RISK CATEGORY:**
- I
 - II
 - III
 - IV
- WIND LOADS:**
(WIND LOADS ARE BASED ON CH. 26 THRU 30 OF ASCE 7)
- WIND SPEED:**
- 160 MPH=ULTIMATE DESIGN WIND SPEED (3-SECOND GUST)
 - 124 MPH=NOMINAL DESIGN WIND SPEED (FASTEST MILE)
- SURFACE ROUGHNESS CATEGORY:**
- B
 - C
 - D
- EXPOSURE CATEGORY:**
- B
 - C
 - D
- WINDBORNE DEBRIS REGION:**
- NO
 - YES
- IMPACT RESISTANT GLAZING:**
- IMPACT RESISTANT GLAZING
 - IMPACT RESISTANT COVERING
 - COMBINATION OF IMPACT RESISTANT GLAZING & COVERING
- INTERNAL PRESSURE COEFFICIENTS:**
- 0.00 (OPEN)
 - +0.18, -0.18 (ENCLOSED)
 - +0.55, -0.55 (PARTIALLY ENCLOSED)
- COMPONENTS AND CLADDING PRESSURES:**
- ZONE 1: +2.1 / -59.4
 - ZONE 2: +24.2 / -67.5
 - ZONE 3: +26.5 / -109.5
 - ZONE 4: +44.0 / -47.9
 - ZONE 5: +44.0 / -57.5
- GEOTECHNICAL INFO:**
(FOUNDATIONS ARE BASED ON A MINIMUM SOIL BEARING CAPACITY OF 2000 PSF)

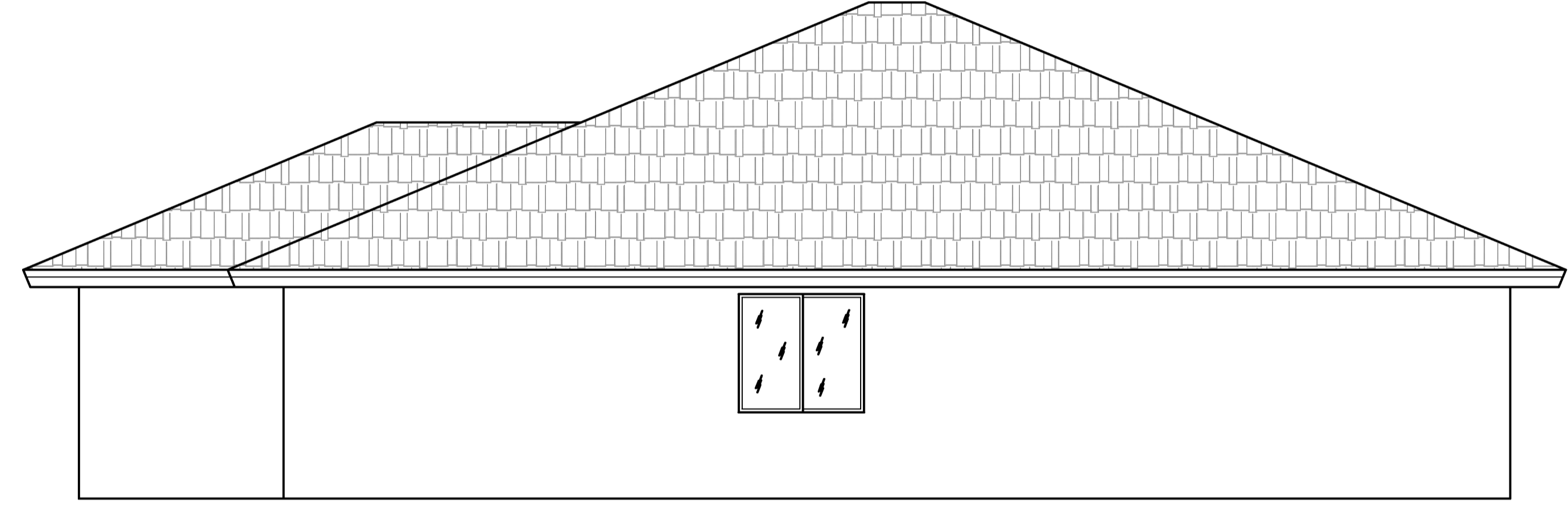
THESE DRAWINGS REFLECT THE DESIGNER'S INTERPRETATION OF ALL DIMENSIONS AND CONDITIONS RELATED TO THIS PROJECT. THE CONTRACTOR SHALL VERIFY ALL DIMENSIONS AND CONDITIONS BEFORE COMMENCEMENT OF WORK. THE CONTRACTOR SHALL BE RESPONSIBLE FOR THE RESULTS AND CONSEQUENCES OF ANY OMISSIONS, ERRORS, OR OMISSIONS IN THE DRAWINGS. THE CONTRACTOR SHALL BE RESPONSIBLE FOR OBTAINING ALL NECESSARY PERMITS AND APPROVALS FROM ALL APPLICABLE AGENCIES. THE CONTRACTOR SHALL BE RESPONSIBLE FOR OBTAINING ALL NECESSARY PERMITS AND APPROVALS FROM ALL APPLICABLE AGENCIES. THE CONTRACTOR SHALL BE RESPONSIBLE FOR OBTAINING ALL NECESSARY PERMITS AND APPROVALS FROM ALL APPLICABLE AGENCIES.

NOTES:
1. ARCH/DECO MASONRY AROUND DOORS, WINDOWS, AND GARAGE @ FRONT ELEVATION
2. PROVIDE GUTTERS AT ALL ELEVATIONS WHERE NEEDED

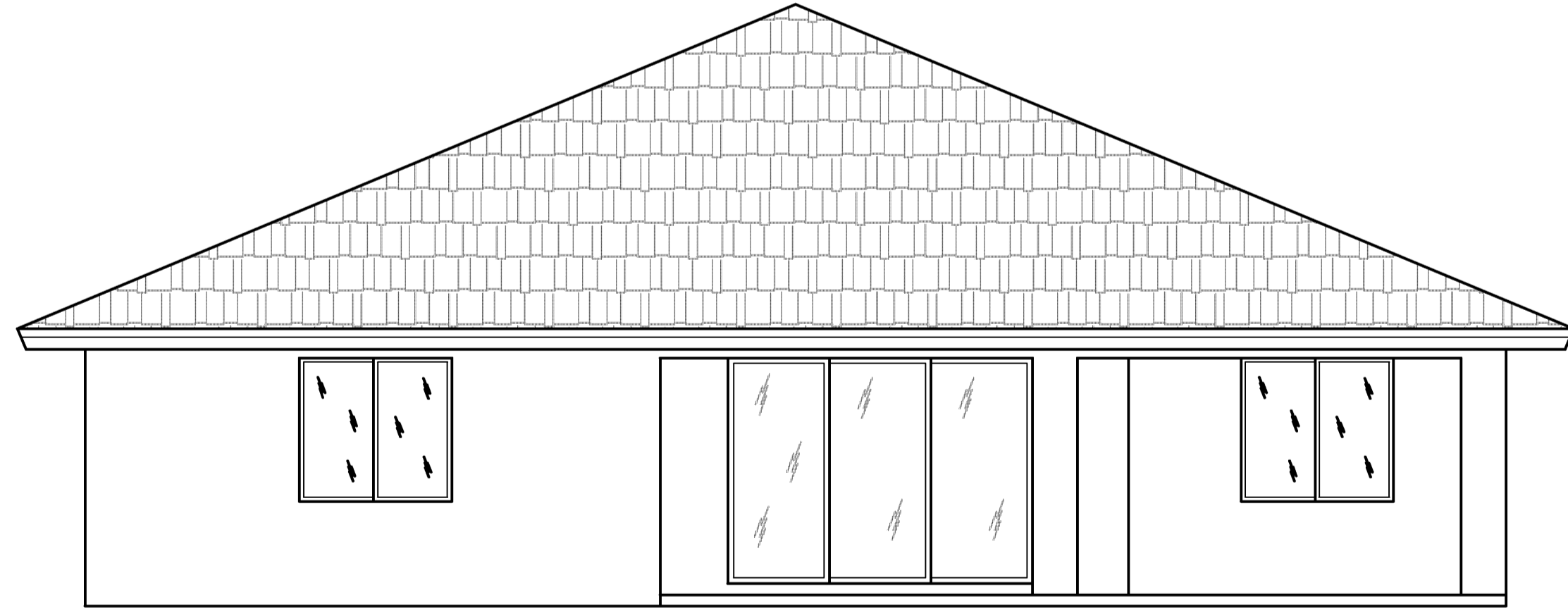


- 1. FIBERGLASS SHINGLE ROOFING TYPICAL AT ALL ELEVATIONS
- 2. STUCCO TYPICAL AT ALL ELEVATIONS
- 3. TOP OF ALL WINDOWS AND DOORS @ 6'-8" AFF UNO.

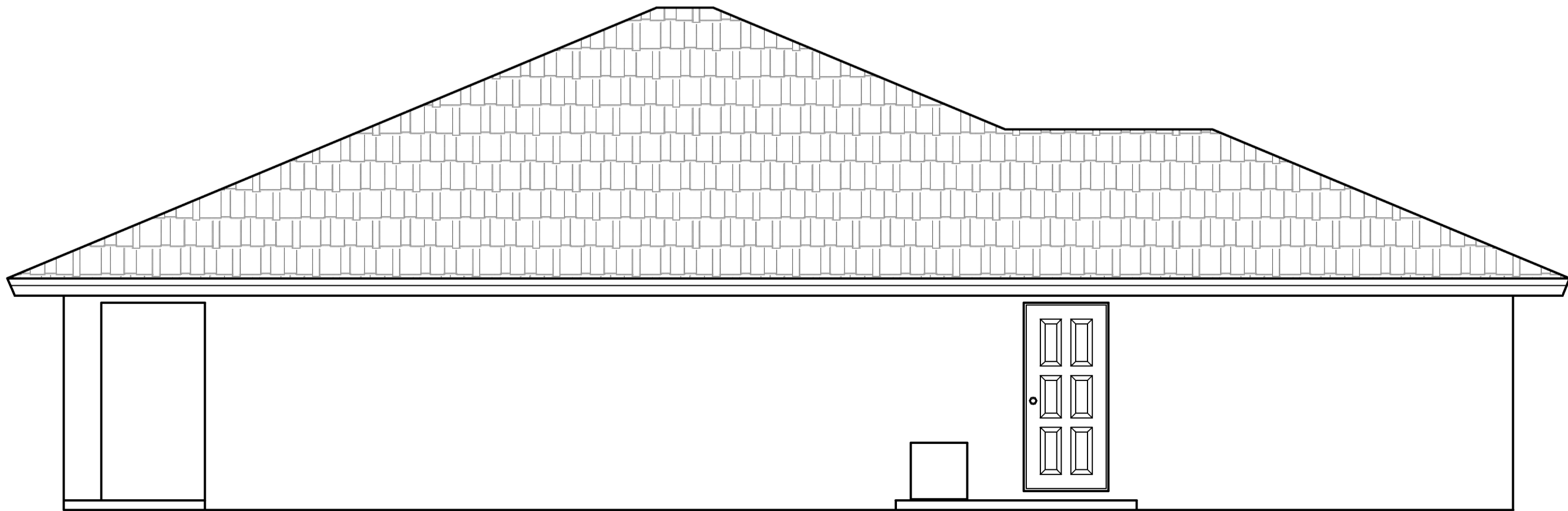
FRONT ELEVATION



RIGHT ELEVATION



REAR ELEVATION



LEFT ELEVATION

DATE: _____

REVISIONS:

NO.	DESCRIPTION

APPROVED: _____

ROBERT W. CASE
FLORIDA P.E. #44643
SCALE: 1/4" = 1'-0"

DATE: JUNE 14, 2018

SHEET: **A1**

ENGINEERING LAND SURVEYING

LIS

2572 West State Road 426
Suite 2084, Oviedo, FL 32765
Phone: (239) 693-9244
Fax: (239) 693-9244

21430 Palm Beach Blvd.
Aval, Fla. 33920
Phone: (239) 693-9244
Fax: (239) 693-9244

3718 KILARNEY STREET, FORT MYERS, FL 33905

EXTERIOR ELEVATIONS

SCALE: 1/4" = 1'-0"

DATE: JUNE 14, 2018

SHEET: **A1**