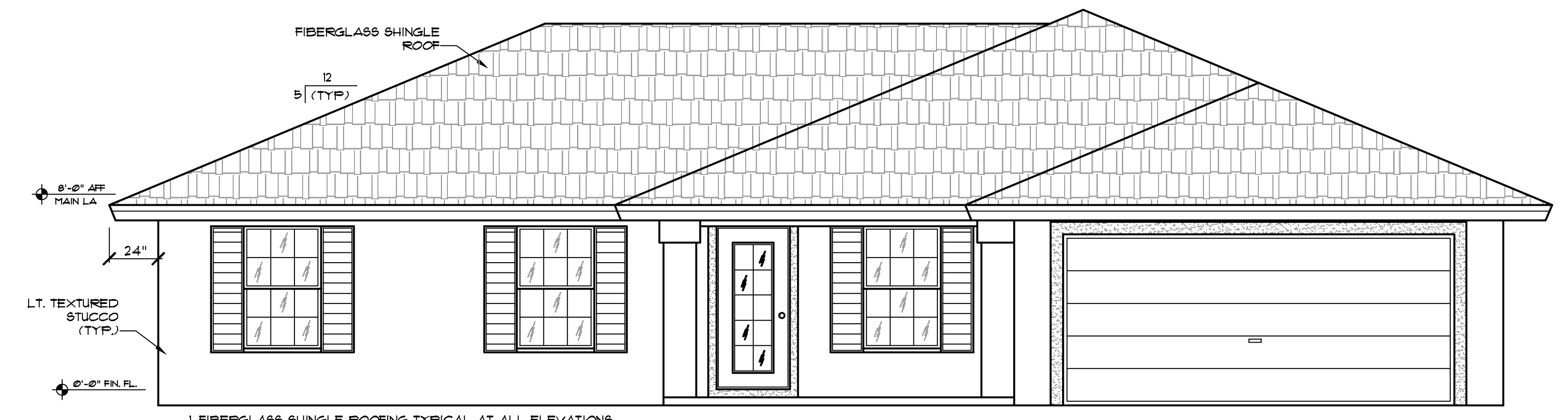


DESIGN PARAMETERS:

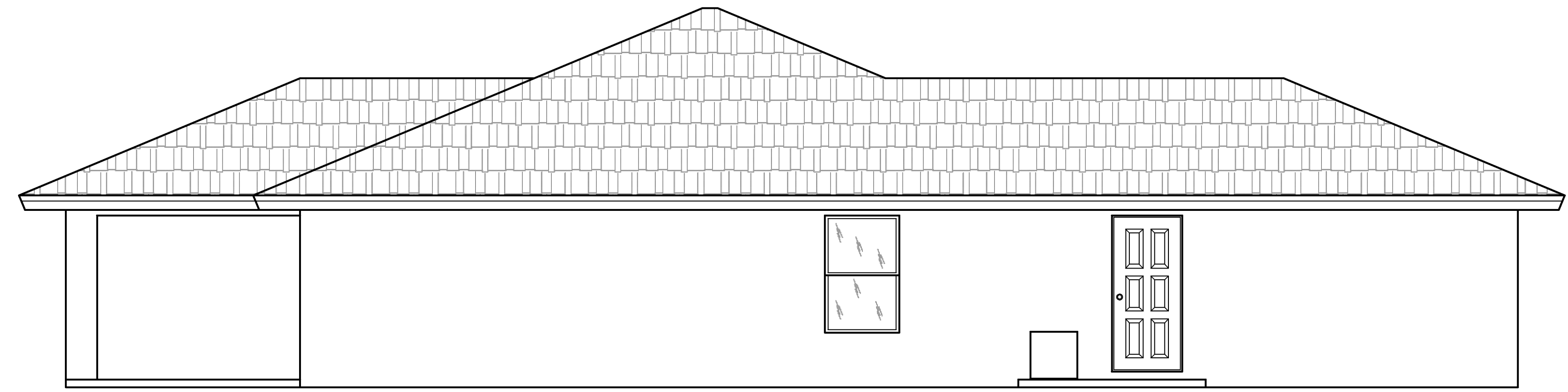
- APPLICABLE CODES:**
- FLORIDA BUILDING CODE, 6TH EDITION (2017) RESIDENTIAL
 - FLORIDA BUILDING CODE, 6TH EDITION (2017) MECHANICAL
 - FLORIDA BUILDING CODE, 6TH EDITION (2017) PLUMBING
 - FLORIDA BUILDING CODE, 6TH EDITION (2017) ENERGY CONSERVATION
 - FLORIDA BUILDING CODE, 6TH EDITION (2017) ACCESSIBILITY
 - 2017 FLORIDA FIRE PREVENTION CODE, 6TH EDITION
 - 2014 NATIONAL ELECTRICAL CODE
 - NATIONAL FIRE PROTECTION CODE, NFPA 101 (LIFE SAFETY)
 - NATIONAL FIRE PROTECTION CODE, NFPA 13 (FIRE SPRINKLERS)
 - NATIONAL FIRE PROTECTION CODE, NFPA 72
- BUILDING OCCUPANCY CLASSIFICATION:**
- GROUP A - ASSEMBLY
 - GROUP B - BUSINESS
 - GROUP D - DAY CARE CENTER
 - GROUP E - EDUCATIONAL
 - GROUP F - FACTORY INDUSTRIAL
 - GROUP H - HAZARDOUS
 - GROUP I - INSTITUTIONAL
 - GROUP M - MERCANTILE
 - GROUP R - RESIDENTIAL
 - GROUP S - STORAGE
- BUILDING CONSTRUCTION TYPE:**
- TYPE I-A
 - TYPE I-B
 - TYPE II-A
 - TYPE II-B
 - TYPE III-A
 - TYPE III-B
 - TYPE IV
 - TYPE V-A
 - TYPE V-B
- RISK CATEGORY:**
- I
 - II
 - III
 - IV
- WIND LOADS:**
(WIND LOADS ARE BASED ON CH. 26 THRU 30 OF ASCE 7)
- WIND SPEED:**
- 160 MPH=ULTIMATE DESIGN WIND SPEED (3-SECOND GUST)
 - 124 MPH=NOMINAL DESIGN WIND SPEED (FASTEST MILE)
- SURFACE ROUGHNESS CATEGORY:**
- B
 - C
 - D
- EXPOSURE CATEGORY:**
- B
 - C
 - D
- WINDBORNE DEBRIS REGION:**
- NO
 - YES
- IMPACT RESISTANT GLAZING
 - IMPACT RESISTANT COVERING
 - COMBINATION OF IMPACT RESISTANT GLAZING & COVERING
- INTERNAL PRESSURE COEFFICIENTS:**
- 0.00 (OPEN)
 - +0.18, -0.18 (ENCLOSED)
 - +0.55, -0.55 (PARTIALLY ENCLOSED)
- COMPONENTS AND CLADDING PRESSURES:**
- ZONE 1: +2.1 / -59.4
 - ZONE 2: +24.2 / -67.5
 - ZONE 3: +26.5 / -109.5
 - ZONE 4: +44.0 / -47.9
 - ZONE 5: +44.0 / -57.5
- GEOTECHNICAL INFO:**
(FOUNDATIONS ARE BASED ON A MINIMUM SOIL BEARING CAPACITY OF 2000 PSF)

THESE DRAWINGS REFLECT THE DESIGNER'S INTERPRETATION OF ALL DIMENSIONS AND CONDITIONS RELATED TO THIS PROJECT. THE OWNER/CONTRACTOR AND ALL TRADESMEN SHALL VERIFY ALL DIMENSIONS AND CONDITIONS AND SHALL REPORT ANY DISCREPANCIES TO THE DESIGNER BEFORE COMMENCEMENT OF WORK.

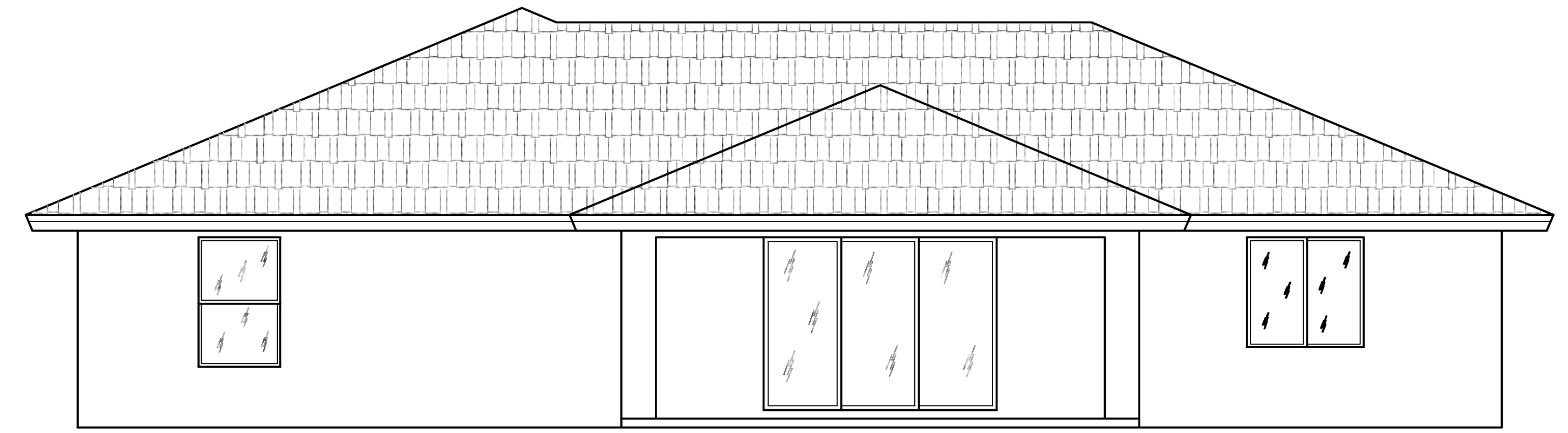
NOTES:
1. ARCH/DECO MASONRY AROUND DOORS, WINDOWS, AND GARAGE @ FRONT ELEVATION
2. PROVIDE GUTTERS AT ALL ELEVATIONS WHERE NEEDED



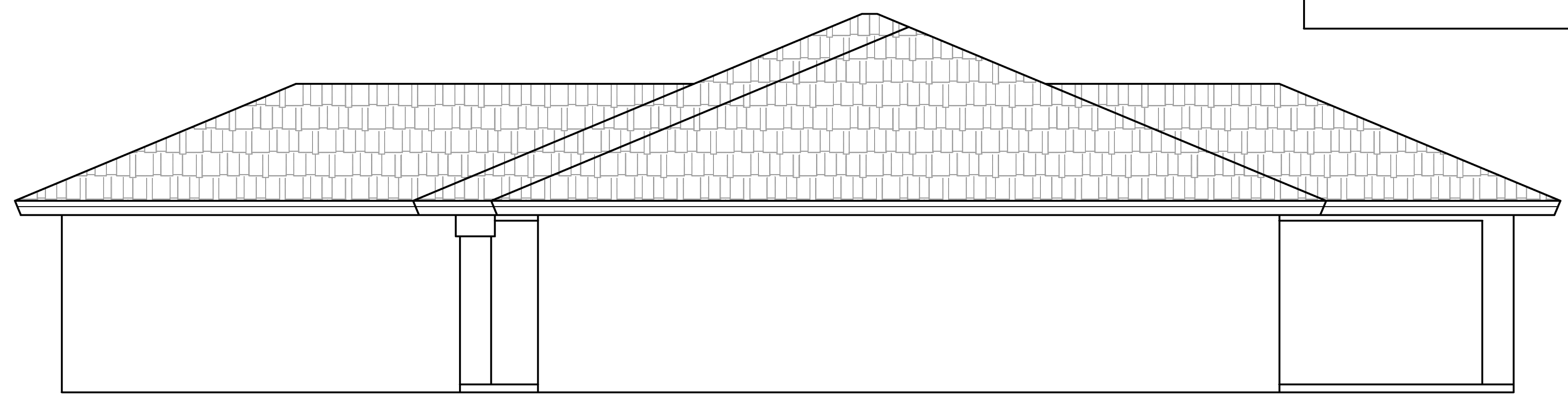
FRONT ELEVATION



RIGHT ELEVATION



REAR ELEVATION



LEFT ELEVATION

DATE: _____

REVISIONS:

NO.	DESCRIPTION

APPROVED:

ROBERT W. CASE
FLORIDA P.E. #44643

ENGINEERING
LAND SURVEYING

LIS

2572 West State Road 426
Suite 2084, Oviedo, FL 32765
Phone: (239) 693-9244
Fax: (239) 693-9244

21430 Palm Beach Blvd.
Avala, Fla. 33920
Phone: (239) 693-9244
Fax: (239) 693-9244

SPEC HOME #1 FOR BIG LEAGUE BUILDERS (GR)
6048 HOUSTON AVENUE, FORT MYERS, FL 33905

EXTERIOR ELEVATIONS

SCALE: 1/4" = 1'-0"

DATE: JUNE 14, 2018

SHEET

A1

KT18-10